



Ventura County Public Health

A Division of the Ventura County Health Care Agency

HIV/AIDS Surveillance Report

January- December 2014

Prepared by
Ventura County Public Health
The HIV/AIDS Center
Office of HIV/AIDS Surveillance

TABLE OF CONTENTS

2014 Ventura County HIV/AIDS Report

• Cumulative HIV/AIDS cases	3
• Ventura County AIDS cases	4
○ Summary 2014 AIDS cases	4
• Ventura County HIV cases	5
○ Summary 2014 HIV cases	5
• Cumulative AIDS cases and AIDS deaths 1985-2014	6
• HIV/AIDS Simultaneous Diagnosis	7
• HIV/AIDS by Race/Ethnicity	8
• HIV/AIDS by Mode of Transmission	9
• HIV/AIDS by Age	10
• HIV/AIDS by Gender	11
• Ventura County “Out Of County” (OOC) cases.....	12
• Summary 2014 cases	13

Our Goals

Our goals follow President Obama’s National HIV/AIDS Strategy, Healthy People 2020 and the State Office of AIDS: 1) To minimize the number of new HIV infections; 2) Maximize the number of people with HIV infection who access appropriate care and treatment; 3) To support, provide prevention education and linkages to needed services; 4) Reduce HIV/AIDS related disparities and deaths due to HIV infection.

What We Do

We improve the lives of people with HIV/AIDS emotionally, socially and medically. The Center provides medical case management to HIV infected and affected people of Ventura County regardless of ability to pay, sexual orientation, documentation, ethnicity, gender, or religious convictions. We provide professional, confidential and culturally sensitive services in English and Spanish.

Direct client services including and not limited to:

- Medical Case Management including benefits counseling, treatment adherence and support
- AIDS Drug Assistance Program (ADAP)Partner Counseling Referral System (PCRS)
- Early Intervention Services (EIS)
- Care Health Insurance Premium Payment Program (CARE/HIPP)
- Court Mandated HIV/AIDS Education
- HIV/AIDS Alcohol and Substance Abuse Outreach
- HIV/AIDS Case Surveillance
- HIV/AIDS-Related Reports and Presentations

We are *underreporting* the number of HIV cases living and receiving services in Ventura County due to the changes in California law. Also, we are not reimbursed for people who move to Ventura County who were diagnosed in another county (OOC) or state (OOS).

This is critical for the following reasons:

- Financial resources provided to Ventura County for HIV/AIDS services is dependent upon the number of living cases of HIV/AIDS reported for Ventura County. (This number includes those residing in Ventura County at time of diagnosis).
- Accurate data is needed to determine strategies for education and prevention programs.
- Patients are living longer.
- We continue to see newly diagnosed patients.
- There has been an increase in the number of people moving here from other areas (OOC or OOS).

	VENTURA COUNTY	CALIFORNIA	USA
Cumulative AIDS	1,451	169,588	VISIT CDC WEBSITE: WWW.CDC.GOV/HIV
Cumulative HIV	514	50,955 (NAMED) 41,155 (NONNAMED)	
Cumulative OOC	772	NA	
Pediatric Cases	18	641	
Known Living Cases	1,251 (not counting OOC cases)	www.cdph.hiv/aids	

Estimate of living cases in Ventura County 1,200-2,500

VENTURA COUNTY AIDS CASES

AIDS	2013	2014
# CASES REPORTED	17	29
# DEATHS	11	18
GENDER		
MALES	16 (94%)	24 (83%)
FEMALES	1 (6%)	5 (17%)
RACE		
WHITE	10 (59%)	14 (48%)
HISPANIC	7 (41%)	12 (41%)
BLACK	0	2 (6%)
AGE AT DIAGNOSIS		
<24 YEARS *	3 (17%)	1 (3%)
25-34	4 (23%)	6 (21%)
35-44	4 (23%)	8 (28%)
45-54	6 (35%)	9 (31%)
≥55	0	5 (17%)
EXPOSURE CATEGORY		
MEN SEX WITH MEN	16 (94%)	22 (76%)
IDU + MSM & IDU	0	2 (6%)
HETEROSEXUAL	1 (6%)	2 (6%)
NO RISK ID (under investigation)	0	4 (14%)
FACILITY OF DIAGNOSIS		
VCMC	9 (53%)	50% of the cases were diagnosed in Ventura County.
PRIMARY MD	1 (5%)	
LA FACILITY	0	
VC PRIVATE HOSPITALS	6 (35%)	
OTHER	1 (5%)	

*The new EHARS data format is different from the HARS system. Please note the age groups changed in 2009.

Summary 2014 AIDS cases:

- An increase in the number of new AIDS cases reported.
- An increase in the number of deaths (18).
- Predominantly White and Hispanic males, 35-54 yrs. of age, men having sex with men.
- 59 % of these cases were diagnosed with HIV and AIDS simultaneously. This is a decrease from 2013.
- If patients with HIV infection can be diagnosed earlier, they can receive medical management and live longer, healthier lives and not spread HIV to other people.
- Four/five women (80%) were diagnosed with HIV and AIDS simultaneously.

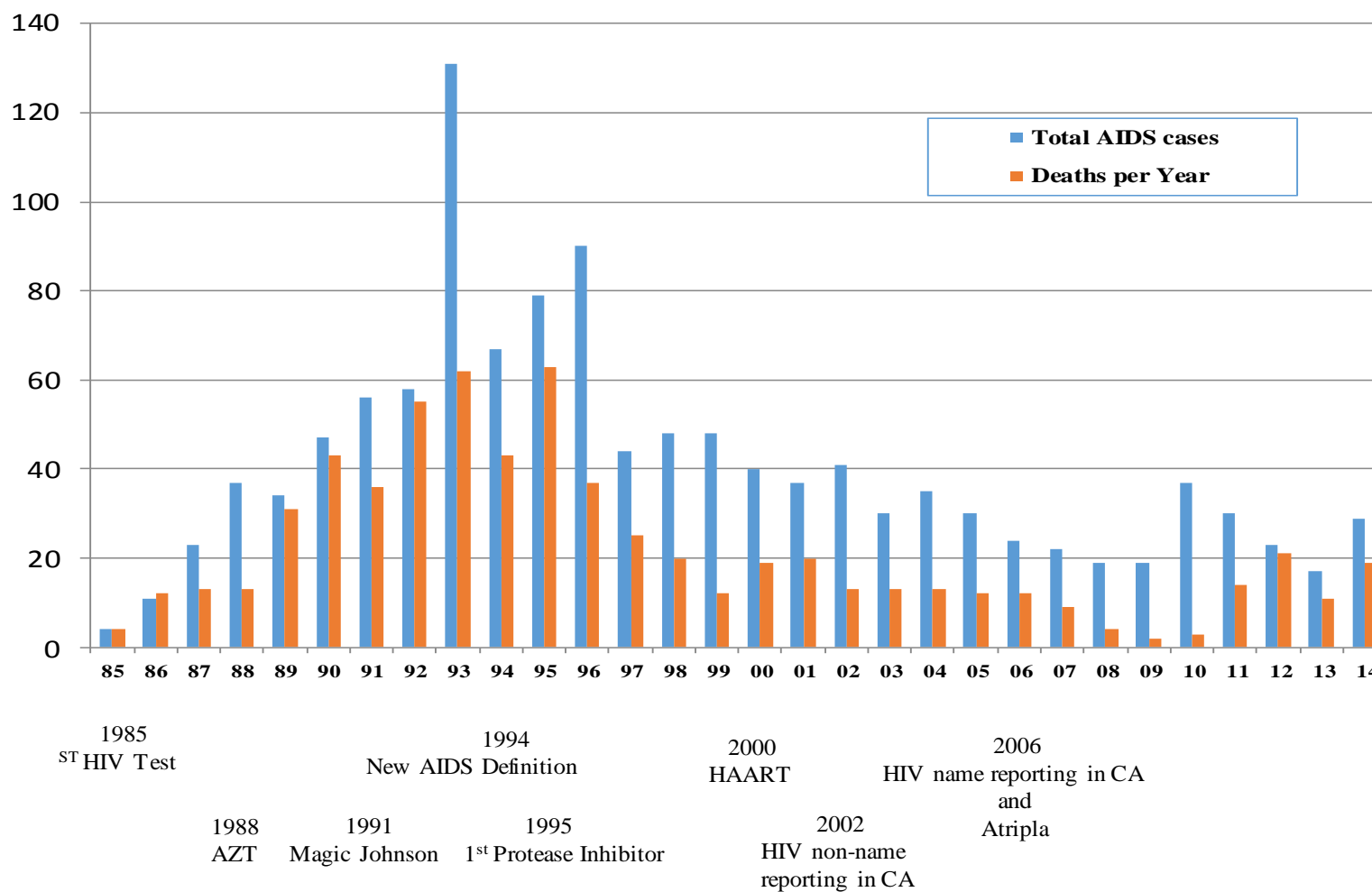
VENTURA COUNTY HIV CASES		
HIV	2013 (name: new & re-ascertained)	2014 (name: new & re-ascertained)
# CASES REPORTED	29	35
# DEATHS	1	1
GENDER		
MALES	27 (93%)	31 (89 %)
FEMALES	2 (7%)	4 (11%)
RACE		
WHITE	8 (28%)	14 (40%)
HISPANIC	16 (55%)	16 (46%)
BLACK	3 (10%)	3 (9%)
AGE AT DIAGNOSIS		
<24 YEARS *	7 (26%)	9 (26%)
25-34	11 (41%)	18 (51%)
35-44	7 (24%)	3 (9%)
45-54	3 (10%)	4 (11%)
55+	1 (4%)	1 (3%)
EXPOSURE CATEGORY		
MEN SEX WITH MEN	26 (89%)	29 (83%)
IDU	1 (3%)	3 (9%)
HETEROSEXUAL	2 (6%)	1 (3%)
NO RISK ID (under investigation)		0
FACILITY OF DIAGNOSIS		
VCMC	3 (10%)	66% of HIV cases were diagnosed in Ventura County.
PRIMARY MD	5 (17%)	
PLANNED PTHOOD	5 (17%)	
VCPH	3 (10%)	
CLINICAS DEL CR	4 (13%)	
OTHER	9 (31%)	

* The new EHARS data format is different from the HARS system. Please note the age groups changed in 2009.

Summary 2014 HIV cases:

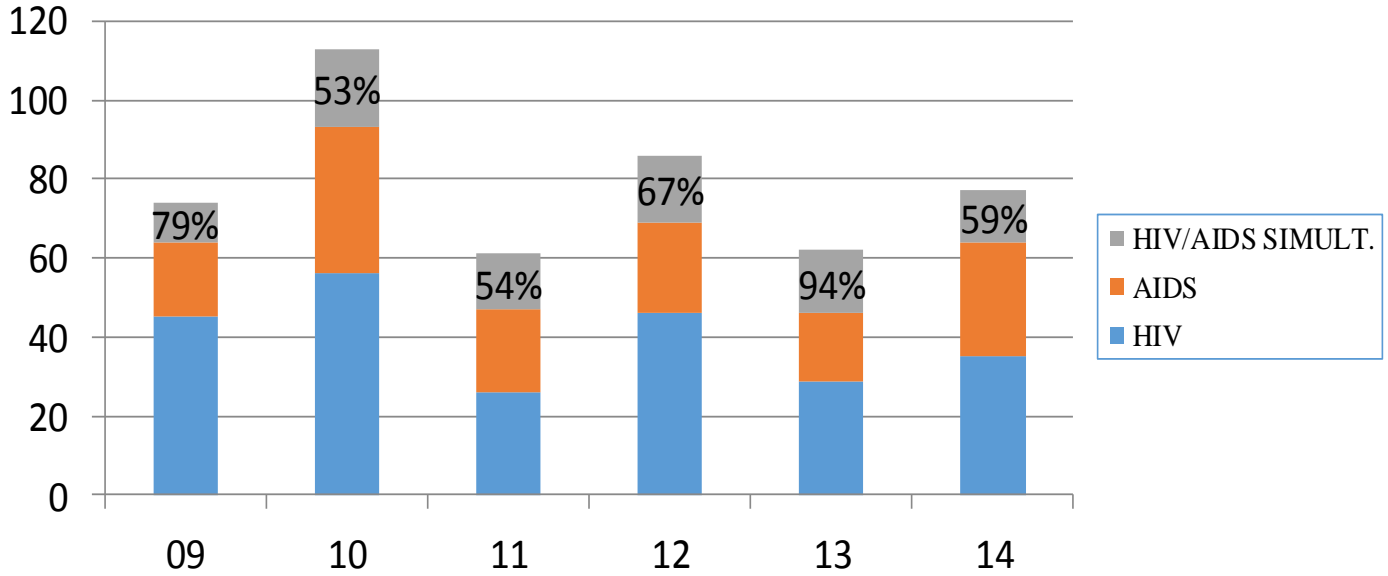
- Increase in the number of new HIV cases diagnosed in Ventura County.
- White and Hispanic males, 25-34 yrs. of age, 77% under the age of 34 yrs. being newly diagnosed. Primary risk is men having sex with men (MSM).
- The facility of diagnosis for newly HIV infected cases is spread throughout Ventura County. For example: Planned Parenthood, Clinicas del Camino Real, Ventura County Public Health (VCPH) and primary MDs.

VENTURA COUNTY PUBLIC HEALTH AIDS CASES AND DEATHS PER YEAR



VENTURA COUNTY PUBLIC HEALTH

HIV/AIDS CASES DIAGNOSED SIMULTANEOUSLY PER YEAR

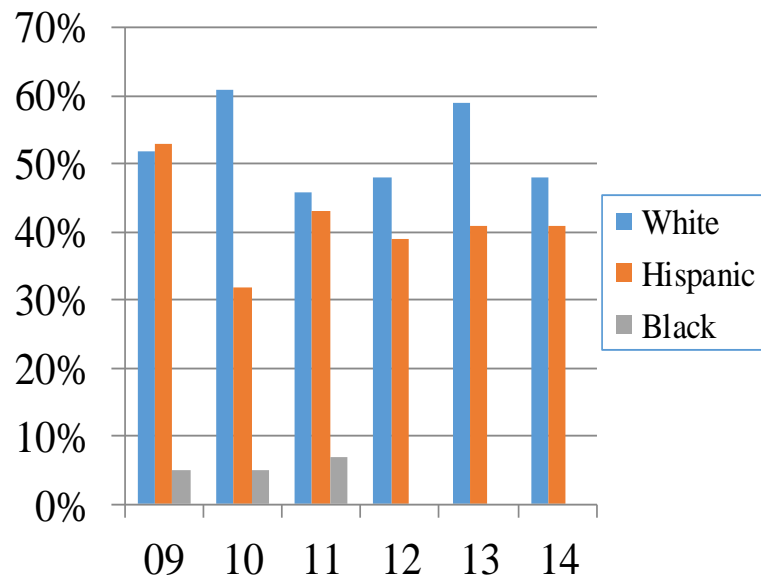


The percent of cases diagnosed simultaneously with HIV and AIDS nationally is 30-35%. We continue to see cases enter into the healthcare system late in the course of the HIV infection in Ventura County.

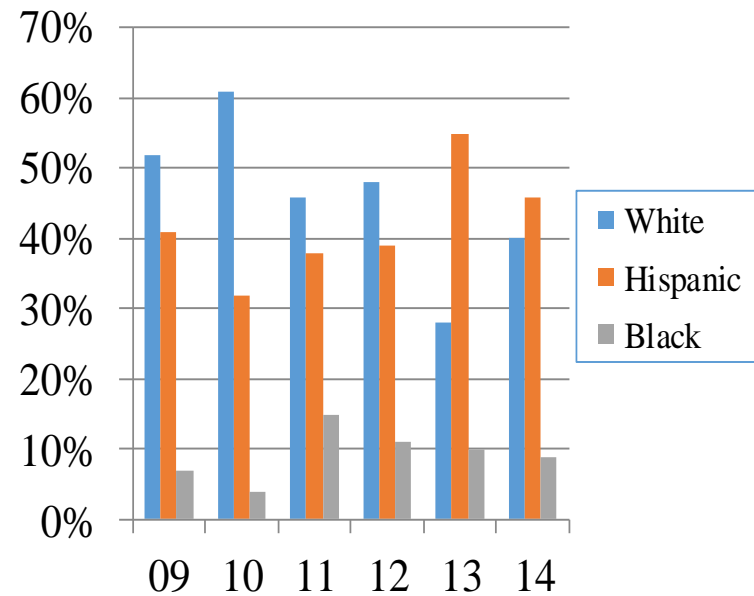
Earlier detection allows better medical management, treatment options, reduced transmission to others, reduced healthcare costs and better patient outcomes.

VENTURA COUNTY PUBLIC HEALTH HIV/AIDS CASES BY RACE/ETHNICITY

AIDS CASES

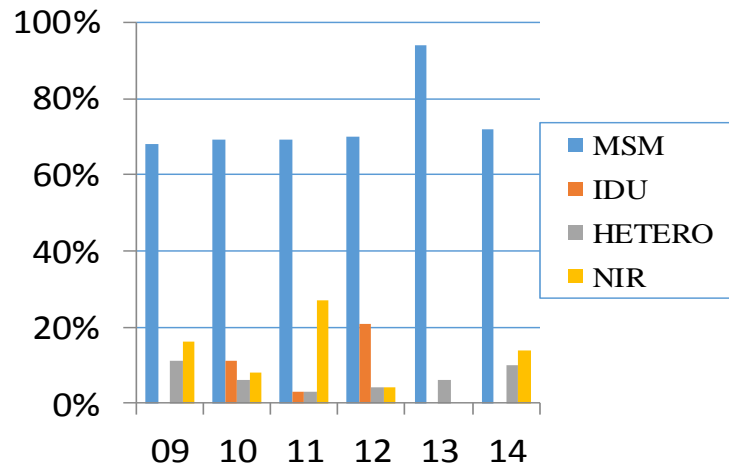


HIV CASES

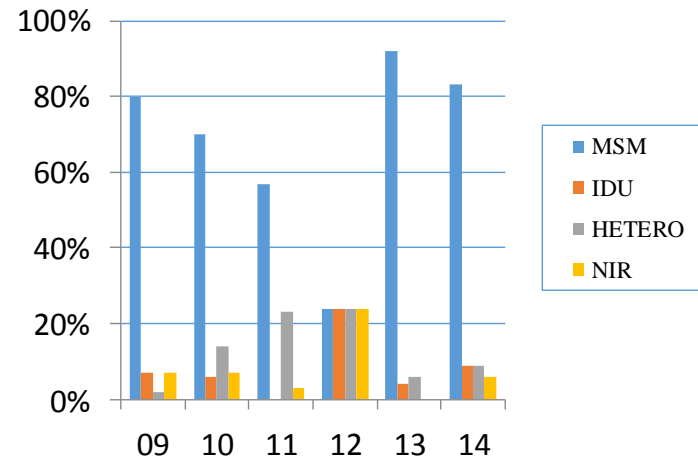


VENTURA COUNTY PUBLIC HEALTH HIV/AIDS CASES BY MODE OF TRANSMISSION

AIDS CASES



HIV CASES



Acronyms in color key box:

MSM = Men who have sex with men

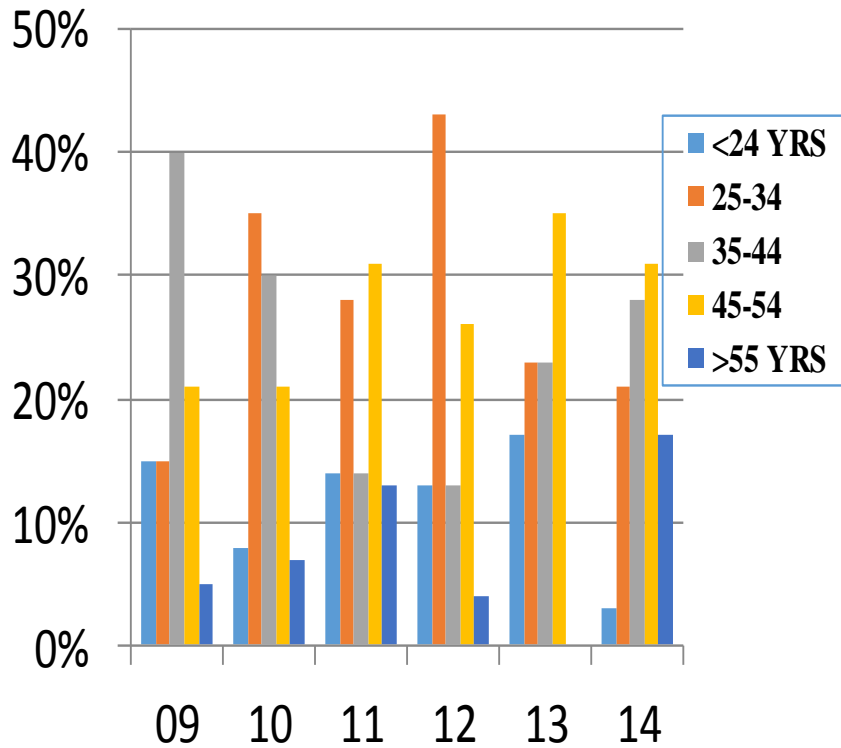
IDU = Intravenous drug use

HETERO = Heterosexual/straight

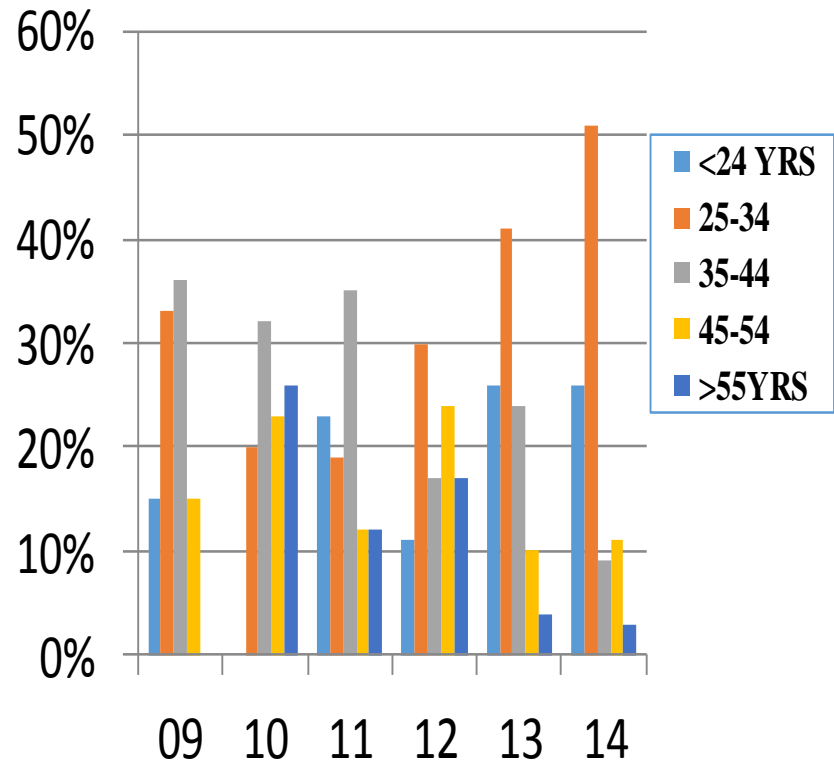
NIR = No identified risk

VENTURA COUNTY PUBLIC HEALTH HIV/AIDS CASES BY AGE

AIDS CASES

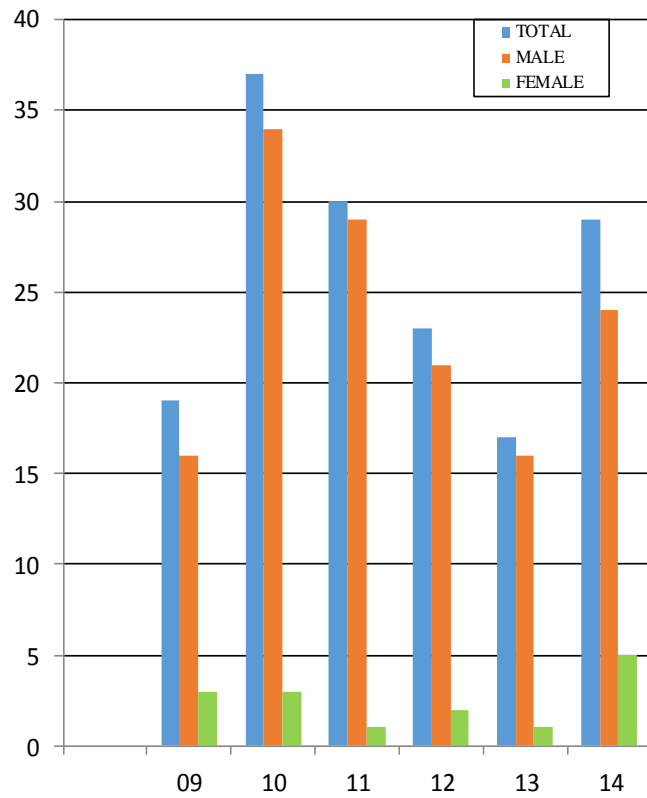


HIV CASES

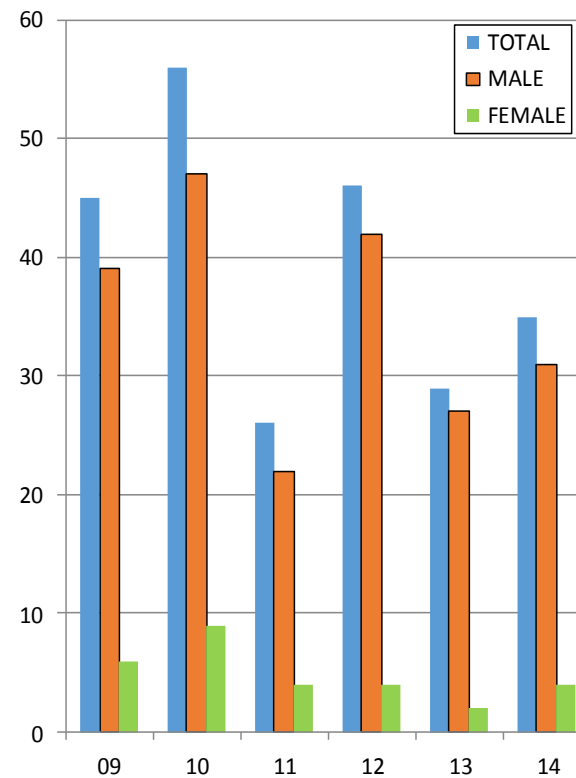


VENTURA COUNTY PUBLIC HEALTH HIV/AIDS CASES BY GENDER

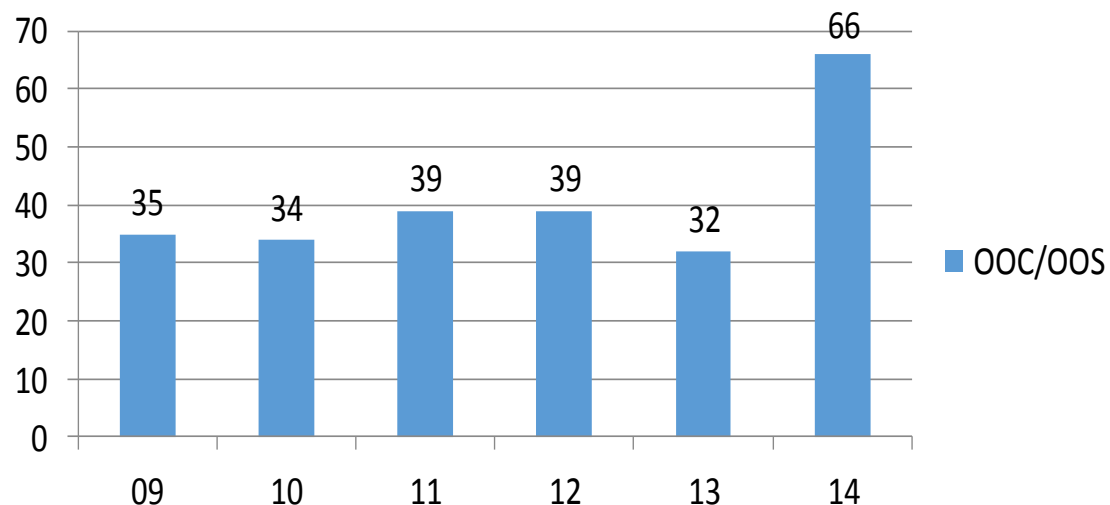
AIDS CASES



HIV CASES



VENTURA COUNTY PUBLIC HEALTH HIV/AIDS Cases from Out of County (OOC) or State (OOS)



OOC/OOS cases are those which have been previously reported in another state or county and are now residing in Ventura County. HIV/AIDS cases are reported based upon their residence at the time of diagnosis. Funding is based on the number of “living” cases reported by each county. All OOC/OOS cases are provided access to HIV/AIDS services in Ventura County. However, Ventura County does not receive HIV/AIDS funding by the State or CDC for these cases.

2014: 47% of OOC patients came to Ventura County with an AIDS diagnosis
21% came from Out Of State (OOS)
50% came from Los Angeles County area

Summary 2014 cases:

- The “age at diagnosis” is 25-34 yrs. of age for HIV and 45-54 yrs. for AIDS. We are starting to see both HIV and AIDS cases diagnosed at an earlier age. This also means that individuals were most likely infected five to six years prior to their AIDS diagnosis.
- 59% of the AIDS cases reported in 2014 were diagnosed with HIV and AIDS simultaneously.
- It continues to be important to emphasize the need for increased HIV testing throughout the healthcare system. If diagnosed earlier and treatment therapies were initiated, the survival rate for these patients would increase and the medical costs would decrease.
- AIDS cases diagnosed in 2014 were White and Hispanic males (45-54 yrs.), risk being men who have sex with men (MSM).
- HIV cases diagnosed in 2014 were predominantly Hispanic, males (25-34 yrs.), MSM.
- 19 deaths were reported in 2014. This is an **increase** from 2013 (11).
- **Significant increase** in Out of County (OOC) or State (OOS) cases (66)
 - 53% were HIV cases
 - 47% were AIDS cases
 - 21% were from OOS
 - 50% of OOC cases were from Los Angeles County
- Began presenting the CDC guidelines for Opt Out testing in various healthcare facilities. The recommendation is to expand the scope of HIV testing to diagnose people who are early in their disease process or who have been unaware of their infection. These individuals are transmitting up to 40% of the new cases seen.