

**VENTURA COUNTY
PUBLIC HEALTH**

**HIV/AIDS SURVEILLANCE
FINAL REPORT**

JANUARY 2012 - DECEMBER 2012

PREPARED BY
VENTURA COUNTY PUBLIC HEALTH
THE HIV/AIDS CENTER
OFFICE OF HIV/AIDS SURVEILLANCE

TABLE OF CONTENTS

2012 Ventura County HIV/AIDS Report

• Cumulative HIV/AIDS cases	3
• Ventura County AIDS cases	4
○ 2012 AIDS summary.....	4
• Ventura County HIV cases	5
○ 2012 HIV summary.....	5
• Cumulative AIDS cases and AIDS deaths 1985-2012.....	6
• HIV/AIDS Simultaneous Diagnosis	7
• HIV/AIDS by Race	8
• HIV/AIDS by Mode of Transmission	9
• HIV/AIDS by Age.....	10
• HIV/AIDS by Gender.....	11
• Ventura County “Out Of County” (OOC) cases	12
• Summary	13

VENTURA COUNTY PUBLIC HEALTH

CALIFORNIA HIV/AIDS REPORTING CHANGES

HIV reporting in California began July 1, 2002 by using a non-name code based system. On April 17, 2006 California implemented emergency regulations to begin reporting HIV by name as required by the CDC (Center for Disease Control) which only allows Ventura County Public Health to report patients who had positive HIV tests after April 17, 2006. These tests include all HIV tests indicative of HIV infection, including a viral load test. The State and the CDC currently only recognize cases which are identified by name. No other cases are included and in fact, they have been deleted from the State's data base. We continue to re-ascertain cases of HIV infection identified by April of 2006. In 2009, California had another transition to the CDC's EHARS system for reporting HIV/AIDS. Eventually all states will be utilizing this system.

This is critical for a number of reasons:

- Financial resources provided to Ventura County for HIV/AIDS services is dependent upon the number of living cases of HIV/AIDS reported for Ventura.
- Accurate data is needed to determine strategies for education and prevention programs.
- We are ***underreporting*** the number of HIV cases living and receiving services in Ventura County due to the changes in the law. The only data which can be reported at this time are HIV cases which are new or have been re-ascertained by name. This means more people with HIV are living and receiving services in Ventura County than we are being reimbursed for by the State and the CDC.

Cumulative AIDS Cases

	VENTURA COUNTY Through 2012	CALIFORNIA Through June 2012	USA Through 2009 www.cdc.gov/hiv
TOTAL CUMULATIVE	1,208	165,559	
TOTAL LIVING	574	72,496	1,142,714 1 in 5 (18.1%) are unaware of their infection.
TOTAL DEATHS	634	93,063	

Cumulative HIV Cases

	VENTURA COUNTY Through 2012	CALIFORNIA Through June 2012	USA www.cdc.gov/hiv
TOTAL CUMULATIVE	404	46,883	
TOTAL LIVING	402	44,717	
TOTAL DEATHS	2	2,166	

VENTURA COUNTY AIDS CASES		
AIDS	2011	2012
#CASES REPORTED	30	23
#DEATHS	14	21
GENDER		
MALES	29 (97%)	21 (91%)
FEMALES	1 (3%)	2 (9%)
RACE		
WHITE	14 (47%)	14 (61%)
HISPANIC	13 (43%)	9 (39%)
BLACK	2 (7%)	0
AGE AT DIAGNOSIS		
<24 YEARS *	4 (14%)	3 (13%)
25-34	8(28%)	10 (43%)
35-44	4 (14%)	3 (13%)
45-54	9 (31%)	6 (26%)
≥55	4 (13%)	1 (4%)
EXPOSURE CATEGORY		
MEN SEX WITH MEN	20 (69%)	16 (70%)
IDU + MSM & IDU	1 (3%)	5 (22%)
HETEROSEXUAL	1 (3%)	1 (4%)
NO RISK ID (under investigation)	8 (27%)	1 (4%)
FACILITY OF DIAGNOSIS		
VCMC	Not available at this time.	Not available at this time.
PRIMARY MD		
LA FACILITY		
VC PRIVATE HOSPITAL		
OTHER		

*The new EHARS data format is different from the HARS system. Please note the age groups changed in 2009.

Summary: 2012 AIDS cases

- A decrease in the number of new AIDS cases reported.
- Unfortunately, a significant increase in the number of deaths.
- Predominantly White and Hispanic males, 25-34 years of age, men having sex with men.
- 74% of these cases were diagnosed with HIV and AIDS simultaneously.
- If patients with HIV infection can be diagnosed earlier, they can receive medical management and live longer, healthier lives and not spread HIV to other people.

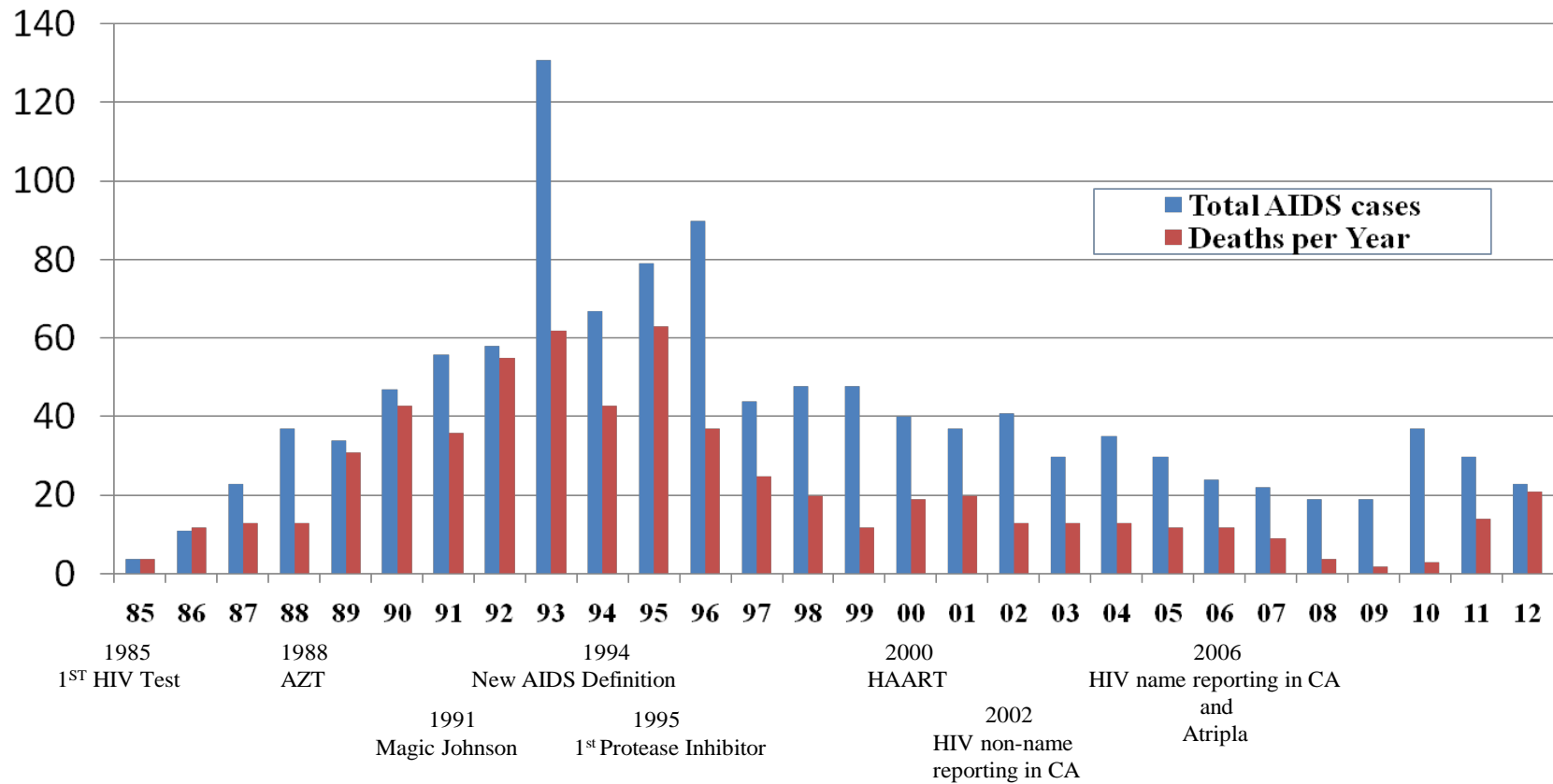
VENTURA COUNTY HIV CASES		
HIV	2011 (name: new & re-ascertained))	2012 (name: new & re-ascertained)
#CASES REPORTED	26	46
#DEATHS	0	0
GENDER		
MALES	22 (85%)	42 (91%)
FEMALES	4 (15%)	4 (9%)
RACE		
WHITE	12 (46%)	22 (48%)
HISPANIC	10 (38%)	18 (39%)
BLACK	4 (15%)	5 (11%)
AGE		
<24 YEARS *	6 (23%)	5 (11%)
25-34	5 (19%)	14 (31%)
35-44	9 (35%)	8 (17%)
45-54	3 (12%)	11 (24%)
55+	3 (12%)	8 (17%)
EXPOSURE CATEGORY		
MEN SEX WITH MEN	15 (58%)	29 (63%)
IDU	0	4 (8%)
HETEROSEXUAL	6 (23%)	1 (2%)
NO RISK ID (under investigation)	1	11 (24%)
FACILITY OF DIAGNOSIS		
VCMC	Not available at this time.	Not available at this time.
PRIMARY MD		
LA FACILITY		
VC PRIVATE HOSPITAL		
OTHER		

* The new EHARS data format is different from the HARS system. Please note the age groups changed in 2009.

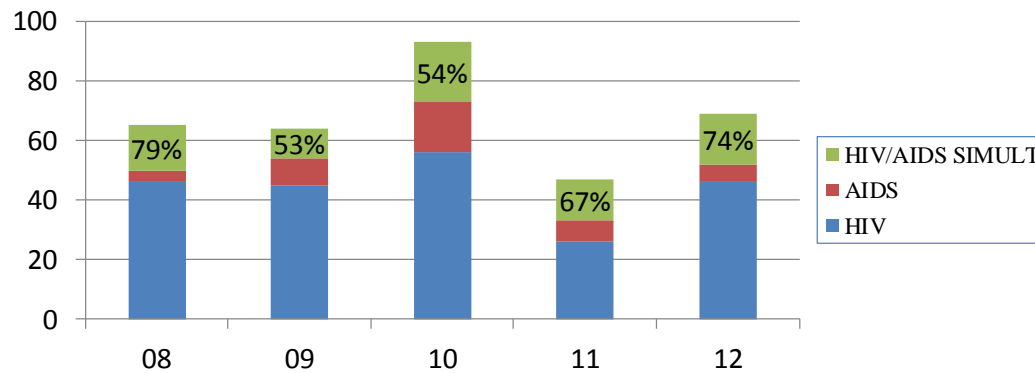
Summary: 2012 HIV cases

- Increase in the number of new HIV cases diagnosed in Ventura.
- Predominantly White males, younger in 2012 (25-34 yrs of age), men having sex with men.
- Increase in the number of African-American diagnosis (significant as we have a relatively small African-American population in Ventura County).
- One perinatal transmission from another country.

VENTURA COUNTY PUBLIC HEALTH AIDS CASES AND DEATHS PER YEAR



VENTURA COUNTY PUBLIC HEALTH HIV/AIDS CASES DIAGNOSED SIMULTANEOUSLY PER YEAR

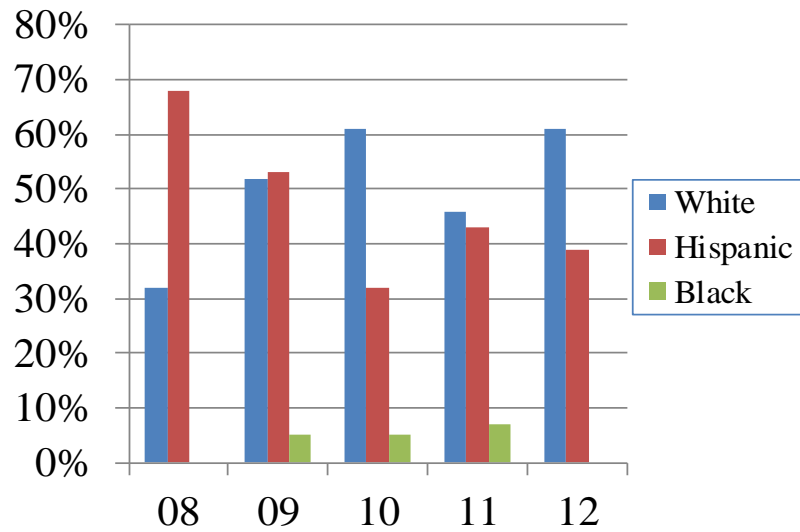


The percent of cases diagnosed simultaneously with HIV and AIDS nationally is 30-35%. We continue to see cases enter into the Healthcare system late in their diagnosis in Ventura County.

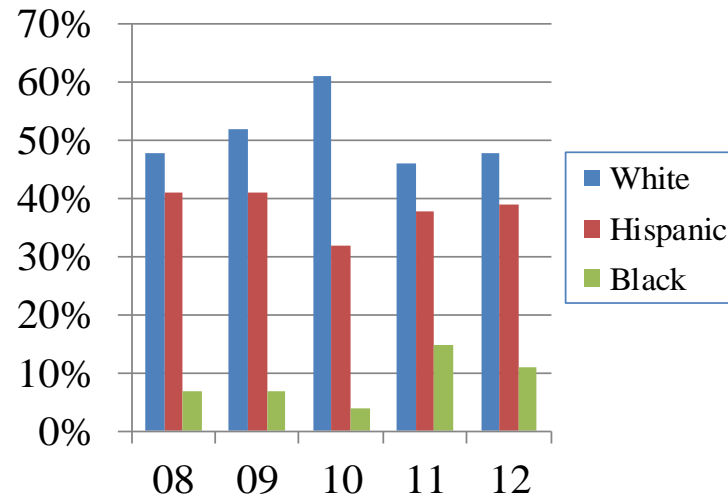
Earlier detection allows better medical management, treatment options, reduced transmission to others, reduced healthcare costs and better patient outcomes.

VENTURA COUNTY PUBLIC HEALTH HIV/AIDS CASES BY RACE

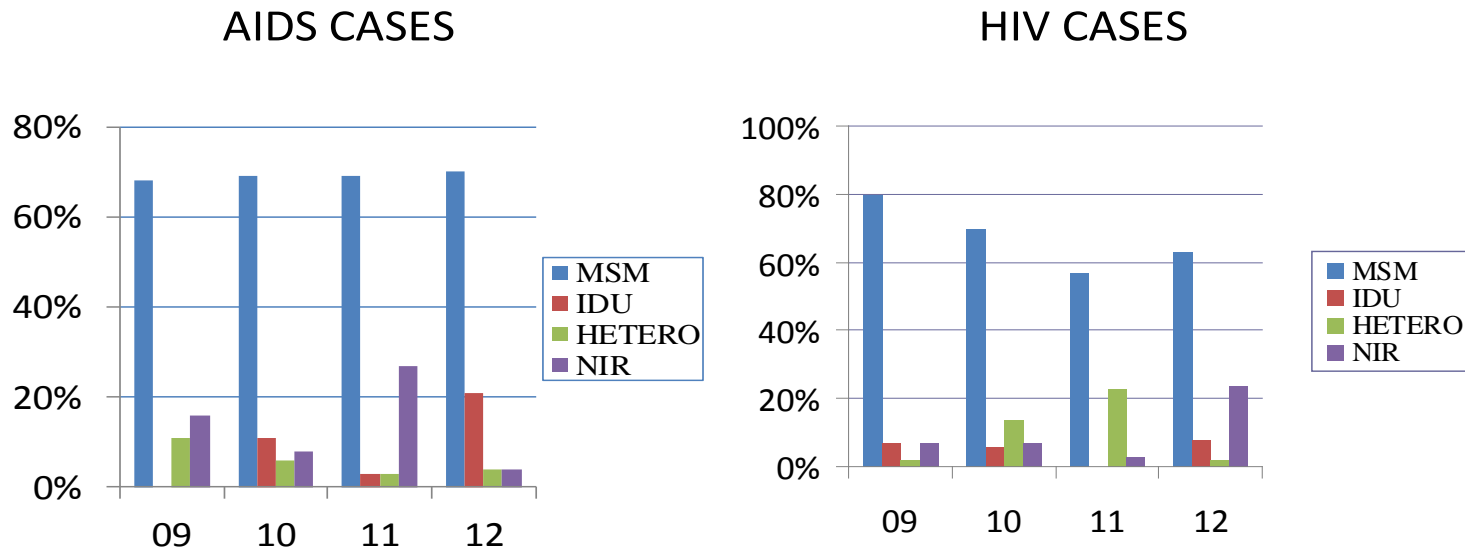
AIDS CASES



HIV CASES



VENTURA COUNTY PUBLIC HEALTH HIV/AIDS CASES BY MODE OF TRANSMISSION



Acronyms in color key box:

MSM = Men who have sex with men

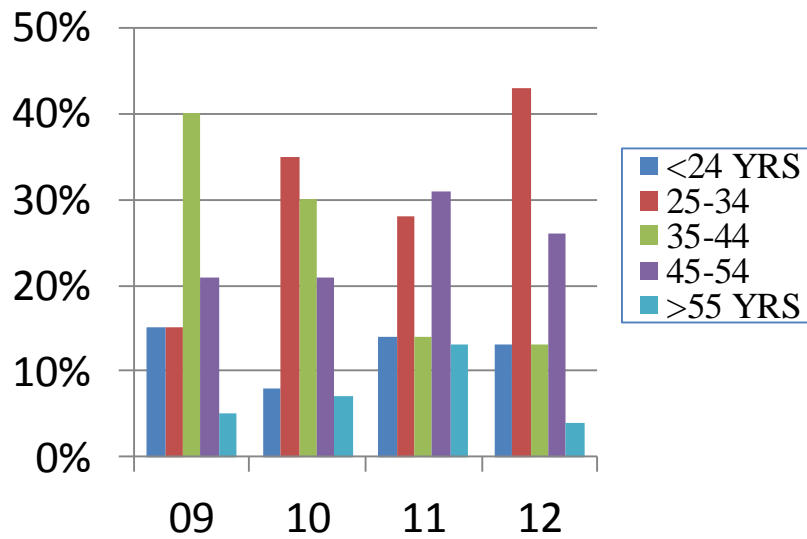
IDU = Intravenous drug use

HETERO = Heterosexual/straight

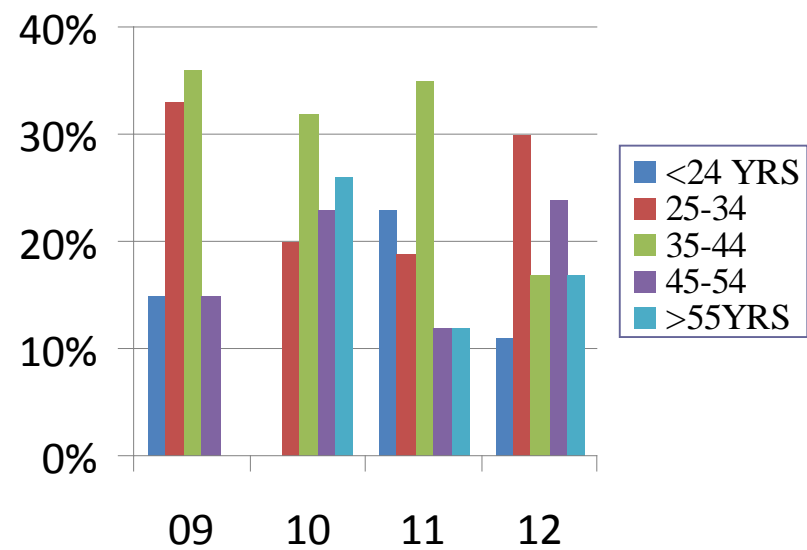
NIR = No identified risk

VENTURA COUNTY PUBLIC HEALTH HIV/AIDS CASES BY AGE

AIDS CASES

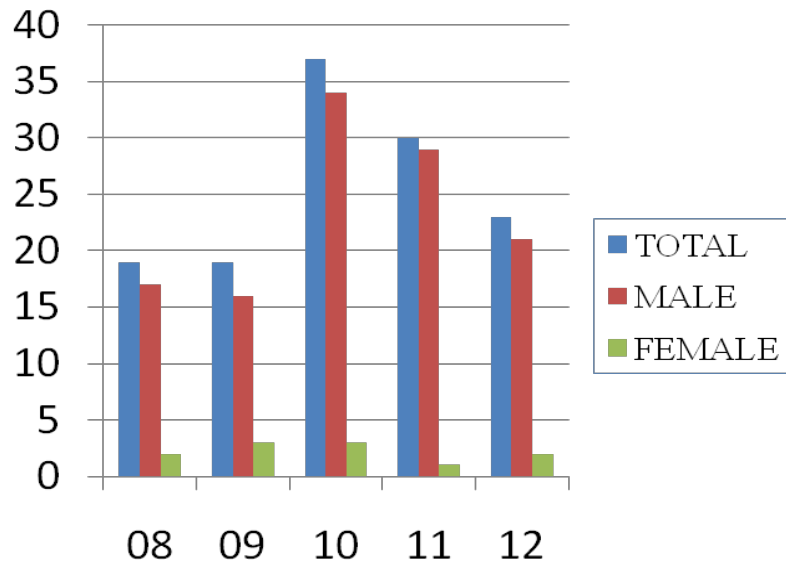


HIV CASES

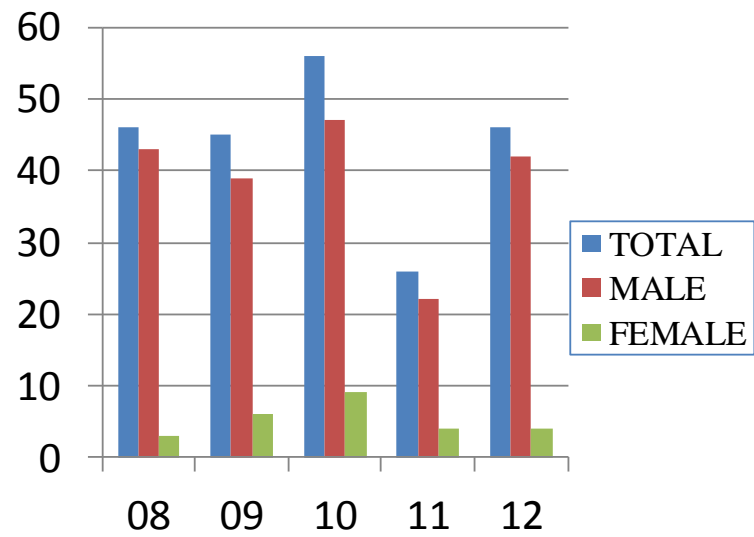


VENTURA COUNTY PUBLIC HEALTH HIV/AIDS CASES BY GENDER

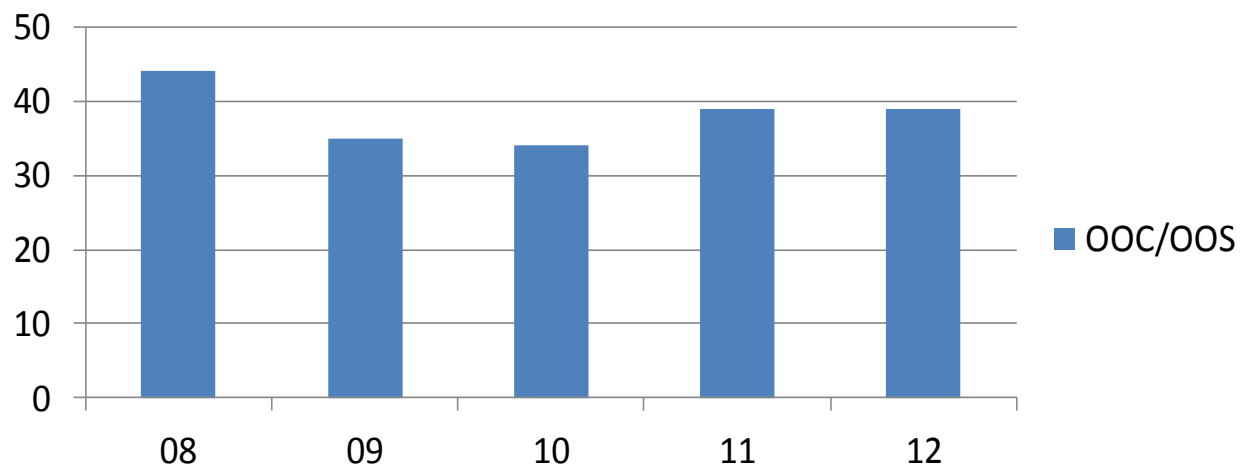
AIDS CASES



HIV CASES



VENTURA COUNTY PUBLIC HEALTH HIV/AIDS CASES from Out of County (OOC) or State (OOS)



OOC/OOS cases are those which have been previously reported in another state or county and are now residing in Ventura County. HIV/AIDS cases are reported based upon their residence at the time of diagnosis. Funding is based on the number of “living” cases reported by each county. All OOC/OOS cases are provided access to HIV/AIDS services in Ventura County. However, Ventura County does not receive HIV/AIDS funding by the State or CDC for these cases.

In 2012:

44% were from LA (Los Angeles)

28% were from OOS

Summary: 2012 cases

- The “age at diagnosis” numbers are similar for both HIV and AIDS cases reported in 2012. The predominant age category for both is 25-34 years of age. We are starting to see AIDS cases diagnosed at an earlier age. This also means that individuals were most likely infected five to six years prior to their AIDS diagnosis.
- 74% of the AIDS cases reported in 2012 were diagnosed with HIV and AIDS simultaneously.
- AIDS cases diagnosed in 2012 were predominantly White, younger males (25-34 yrs.), men having sex with men.
- 11% of the HIV cases were African-American. Ventura County has a relatively small African-American population. This reflects a slightly higher incidence rate.
- 21 deaths were reported in 2012. This is a significant increase. Several cases were patients who entered the hospital diagnosed simultaneously with HIV and AIDS. They came into care very late in their disease process with advanced opportunistic infections. These patients were unaware of their HIV/AIDS status until they entered the emergency room.
- It is important to emphasize the importance and need for increased HIV testing throughout the healthcare system. If diagnosed earlier and treatment therapies were initiated, the survival rate for these patients would increase and the medical costs would decrease.