

**VENTURA COUNTY
PUBLIC HEALTH**

**HIV/AIDS SURVEILLANCE
FINAL REPORT**

JANUARY 2004 - DECEMBER 2004

PREPARED BY
VENTURA COUNTY PUBLIC HEALTH
THE HIV/AIDS CENTER
OFFICE OF HIV/AIDS SURVEILLANCE

VENTURA COUNTY PUBLIC HEALTH

This final HIV/AIDS Surveillance Report will discuss reported cases of HIV/AIDS to the Ventura County Public Health Department from January 2004 to December 2004. Ventura County Public Health has been conducting active AIDS surveillance since 1987. **HIV reporting began July 1, 2002.**

CUMULATIVE DATA FOR HIV /AIDS

| | VENTURA HIV | VENTURA AIDS | VENTURA OUT OF CTY | CALIFORNIA AIDS (11/04) | USA AIDS (12/03) |
|--------------|----------------|-----------------|-----------------------|-------------------------------|------------------------|
| ADULT CASES | 286 | 958 | | 135,060 | 920,566 |
| ADULT DEATHS | 3 | 538 | | 78,637 | 518,568 |
| PED CASES | 8 | 3 | | 647 | 9,419 |
| PED DEATHS | 0 | 2 | | 387 | 5,492 |
| TOTALS | 294 | 961 | 338 | 135,707 | 929,985 |
| DEATHS | 3 | 540 | 143 | 79,024 | 524,060 |

- Cumulative data, numbers may change due to delays in reporting.
- Non-resident (Out of County) cases are diagnosed cases of HIV/AIDS reported by another county or state but who are now residing and receiving care in Ventura County. These cases are counted at the time they are reported to the Health Department, not when they were diagnosed.
- There were **thirty four** new Non-Resident cases in 2004 compared to **thirty** reported in 2003. There were nineteen in 2002.

COMPARISON POINTS FOR HIV/AIDS IN VENTURA COUNTY

THIS TABLE PROVIDES A SIDE BY SIDE COMPARISON OF THE HIV/AIDS CASES ENTERED IN '2004. FOR EXAMPLE, THE HIV CASES ENTERED WERE PRIMARILY HISPANIC MALES, AGE 30-39, WHOSE RISK FACTOR WAS MSM. THE AIDS CASES ENTERED IN 2004 WERE PRIMARILY WHITE MALES, AGE 30-50, WHOSE RISK IS MSM.

JANUARY 2004 – DECEMBER 2004

| | HIV CASES | AIDS CASES |
|-------------------|-----------------------------|------------------------------|
| AGE | 30-39 (34%) | 30-39 (46 %) and > 40 (40%) |
| RACE/ETHNICITY | 50 % HISPANIC 41 % WHITE | 51% WHITE 46 % HISPANIC |
| MALE | 77% | 86% |
| FEMALE | 23% | 14% |
| EXPOSURE CATEGORY | 41% MSM (Men sex w/ men) | 57% MSM |

| VENTURA COUNTY AIDS CASES | | |
|----------------------------------|----------|----------|
| AIDS | 2003 | 2004 |
| #CASES REPORTED | 30 | 35 |
| #DEATHS | 12 | 13 |
| MALES | 27 (90%) | 31 (86%) |
| FEMALES | 3 (10%) | 4 (14%) |
| RACE | | |
| WHITE | 12 (40%) | 18 (51%) |
| HISPANIC | 14 (47%) | 16 (46%) |
| BLACK | 2 (7%) | 0 |
| AGE AT DIAGNOSIS | | |
| <19 YEARS | 2 (7%) | 0 |
| 20-29 | 2 (7%) | 5 (14%) |
| 30-39 | 9 (30%) | 16 (46%) |
| 40-49 | 8 (27%) | 11 (31%) |
| >49 | 9 (30%) | 3 (9%) |
| EXPOSURE CATEGORY | | |
| MEN SEX WITH MEN | 8 (28%) | 20 (57%) |
| IDU | 5 (17%) | 2 (6%) |
| HETEROSEXUAL | 2 (7%) | 4 (11%) |
| NO RISK ID (under investigation) | 10 (34%) | 9 (26%) |
| DISEASE CATEGORY | | |
| PCP | 8 (27%) | 6 (17%) |
| KS | 0 | 0 |
| CD4 | 14 (47%) | 21 (60%) |
| OTHER OI'S (NO PCP) | 8 (27%) | 8 (23%) |
| FACILITY OF DIAGNOSIS | | |
| VCMC | 27 % | 46% |
| PRIMARY MD | 27 % | 26% |
| LA FACILITY | 13% | 11% |
| VC PRIVATE HOSPITAL | 27 % | 11% |
| OTHER | 6% | 6% |

- **Eighty six percent** of the patients diagnosed with AIDS in the year 2004 were diagnosed with HIV and AIDS at the same time, compared to being diagnosed HIV+ and years later AIDS. This is well above the national average.
- There was an increase in the number of AIDS cases reported in 2004.
- Race/ ethnicity has been predominantly white/hispanics.
- Age trends remain the same as in previous years, predominantly 30 years and over.
- There is a little more diversity in the facilities of diagnosis than in previous years. Probably due to the initiation of HIV reporting. More healthcare providers are now cognizant of reporting laws.
- Due to the volume of HIV and AIDS cases there are more cases with no identifiable risk. No Identifiable Risk (NIR) means that there is still a determination to be made on how the case was exposed to HIV. The CDC requires an investigation on these cases.

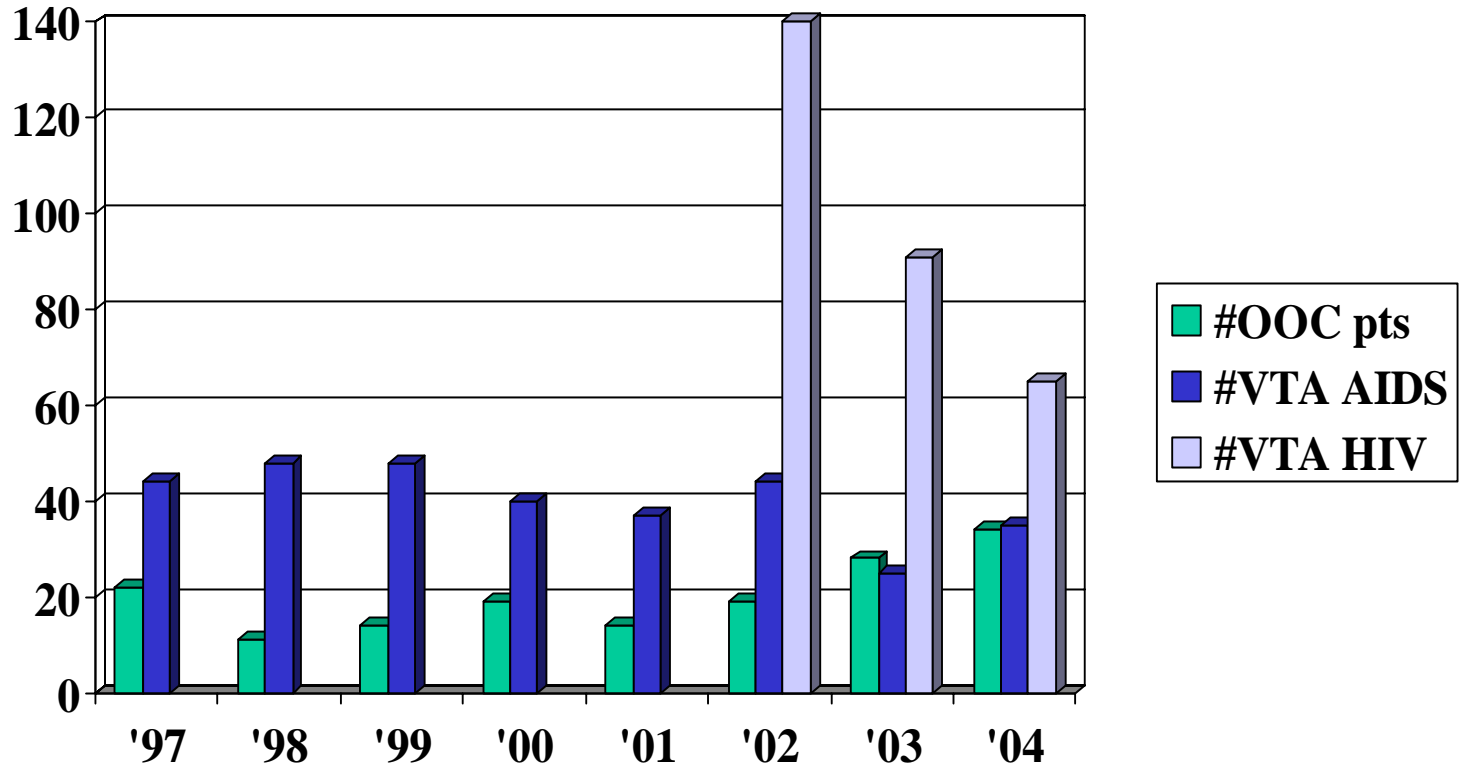
| VENTURA COUNTY HIV CASES | | |
|---------------------------------|-------------|-------------|
| HIV | 2003 | 2004 |
| #CASES REPORTED | 115 | 64 |
| #DEATHS | 2 | 1 |
| MALES | 94 (82%) | 49 (77%) |
| FEMALES | 21 (18%) | 12 (23%) |
| RACE | | |
| WHITE | 70 (61%) | 26 (41%) |
| HISPANIC | 35 (30%) | 32 (50%) |
| BLACK | 7 (6%) | 4 (6%) |
| AGE | | |
| <19 YEARS | 10 (8%) | 6 (10%) |
| 20-29 | 20 (17%) | 15 (23%) |
| 30-39 | 40 (35%) | 22 (34%) |
| 40-49 | 36 (31%) | 15 (23%) |
| >49 | 9 (8%) | 6 (9%) |
| EXPOSURE CATEGORY | | |
| MEN SEX WITH MEN | 57 (52%) | 25 (41%) |
| IDU | 12 (11%) | 5 (8%) |
| HETEROSEXUAL | 3 (3%) | 10 (16%) |
| NO RISK ID(under investigation) | 33 (30%) | 19 (31%) |
| FACILITY OF DIAGNOSIS | | |
| VCMC | 27% | 34% |
| PRIMARY MD | 33% | 44% |
| LA FACILITY | 31% | 13% |
| VC PRIVATE HOSPITAL | 5% | 8% |
| OTHER | 4% | 1% |

HIV reporting began July 1, 2002. We now have approximately 2.5 years of data. We are still retro-actively reporting cases, and will continue to do so for the first 2-4 years. There are also a large number of duplications with other counties and states, which are still being investigated.

- The HIV cases are primarily hispanic (50%).
- Predominantly 30-39 years of age.
- The major risk category is MSM (men having sex with men).
- Again, there is more diversity in the facilities where HIV was diagnosed.Due to Lab reporting of HIV.
- A large proportion of cases have no identified risk and are under investigation. For example, all heterosexual transmissions are investigated per CDC requirements, unless there is an identified HIV positive partner. 80 to 90% of these cases are investigated and then re-classified to another risk.
- There is a significant decrease in the number of HIV cases reported which is primarily due the “catching up” of retro-active cases.

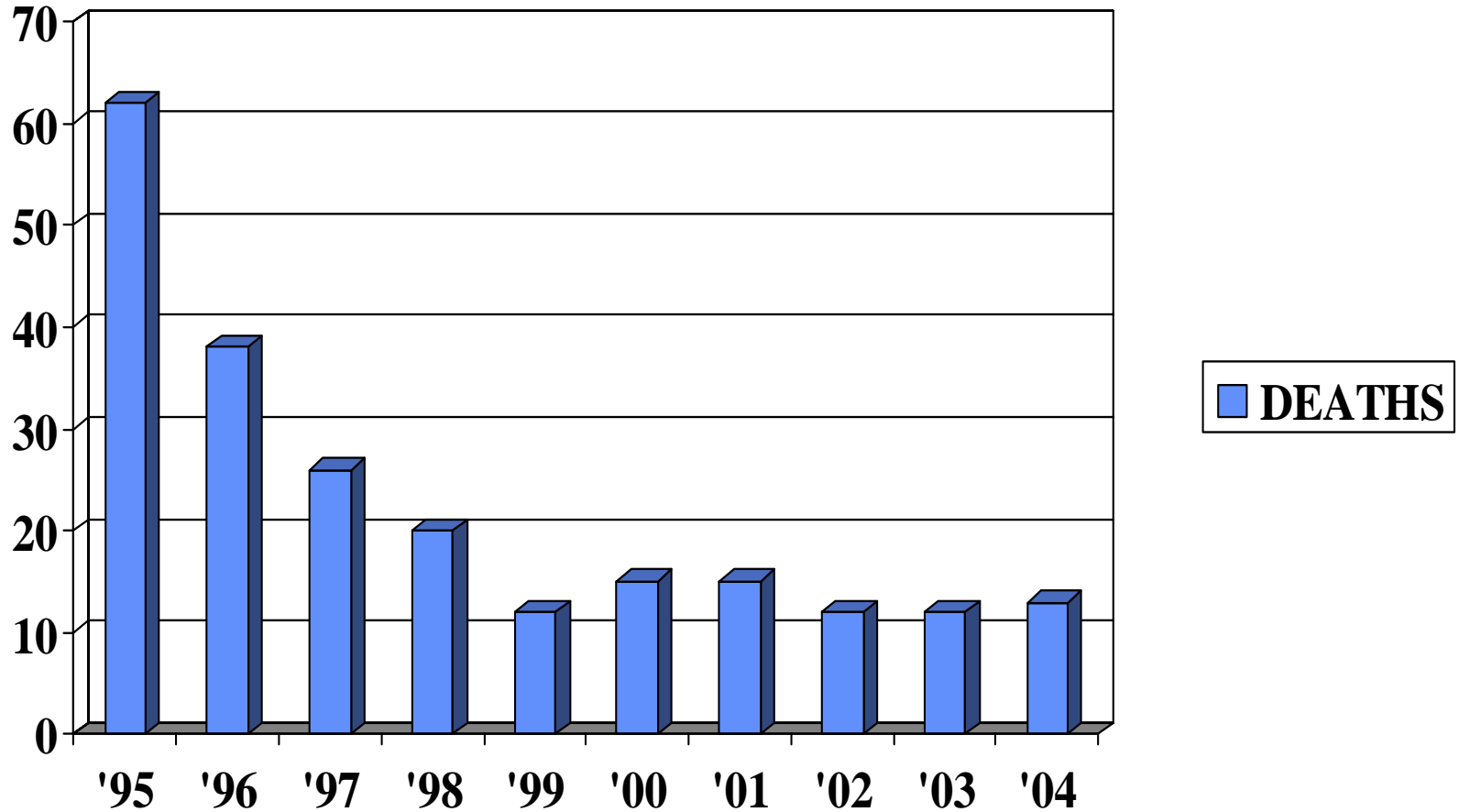
VENTURA COUNTY HIV/AIDS SURVEILLANCE

A comparison of Ventura County HIV/AIDS cases and Out of County (diagnosed in another county or state and now living in Ventura) cases reported each year

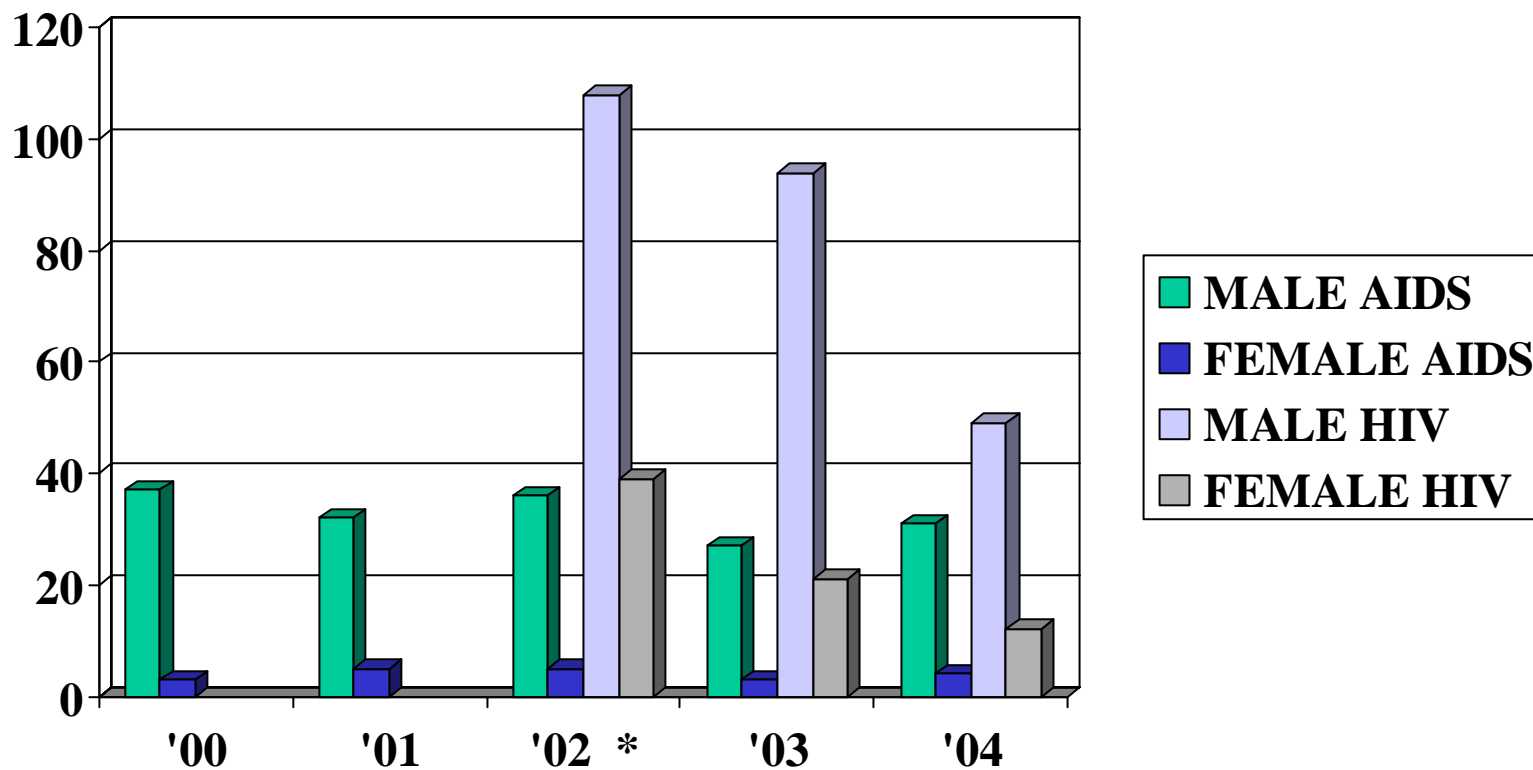


VENTURA COUNTY PUBLIC HEALTH

RECORDED AIDS DEATHS PER YEAR

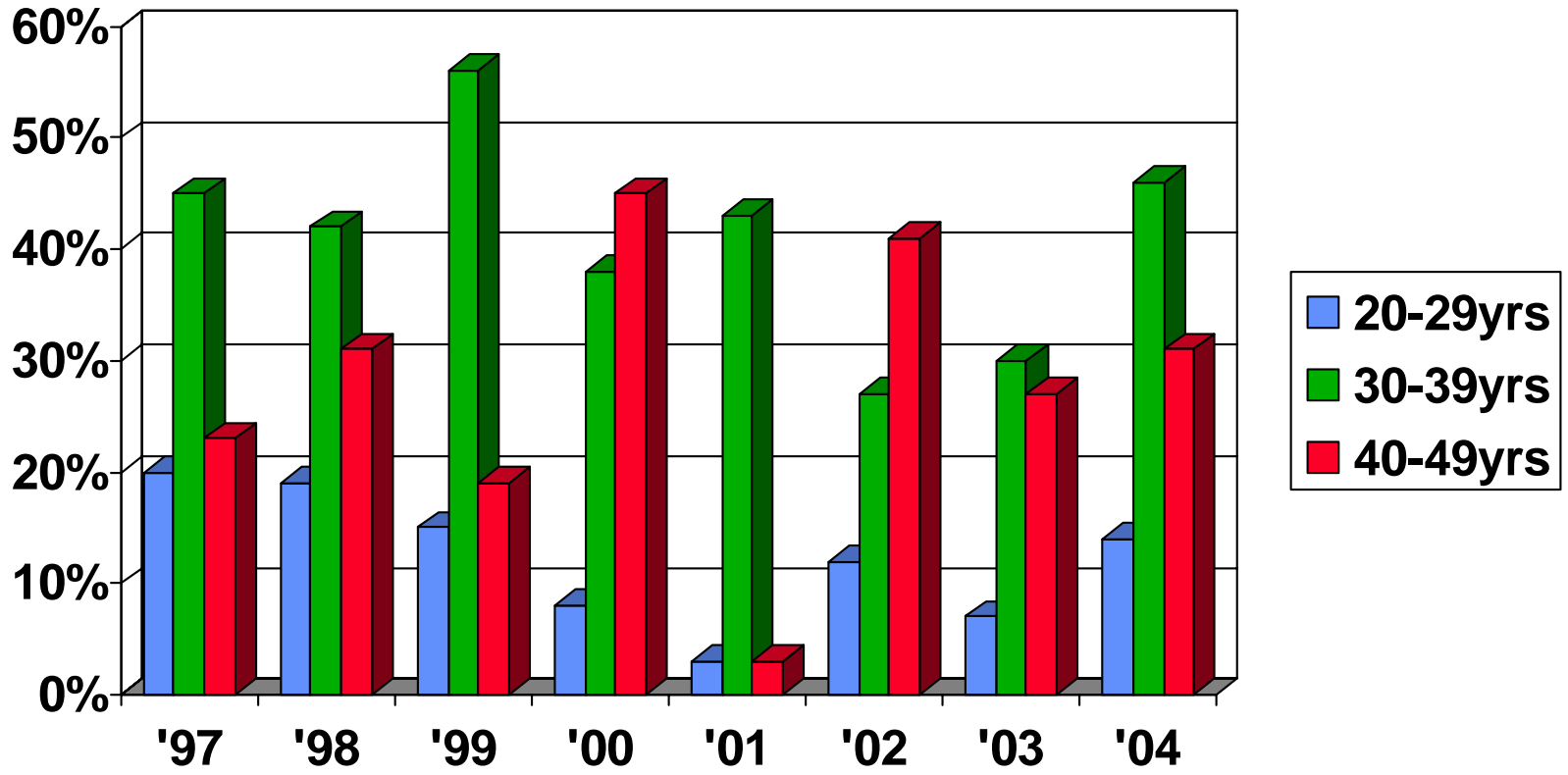


VENTURA COUNTY PUBLIC HEALTH HIV/AIDS SURVEILLANCE REPORTED CASES OF HIV/AIDS BY GENDER

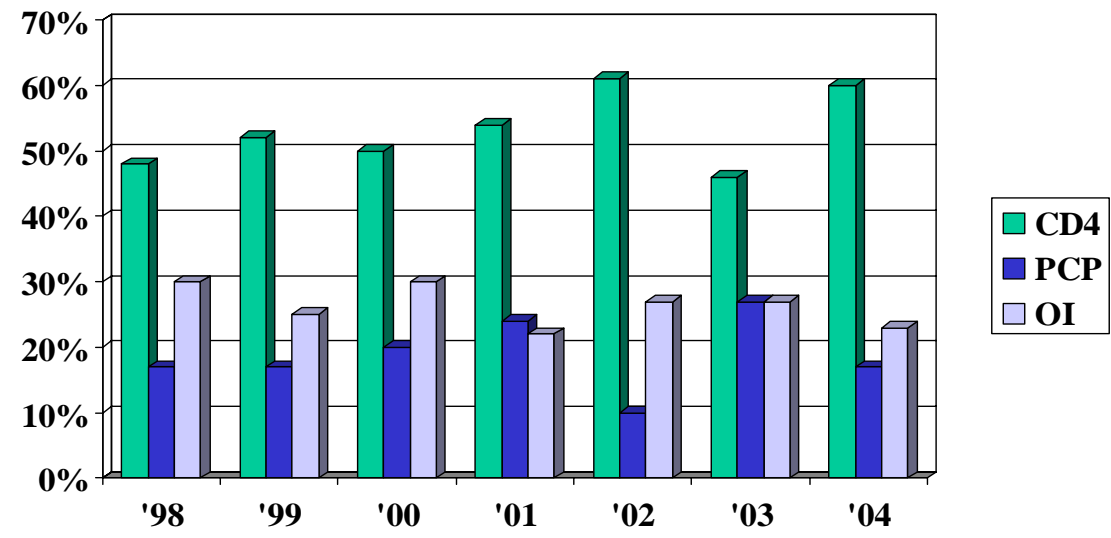
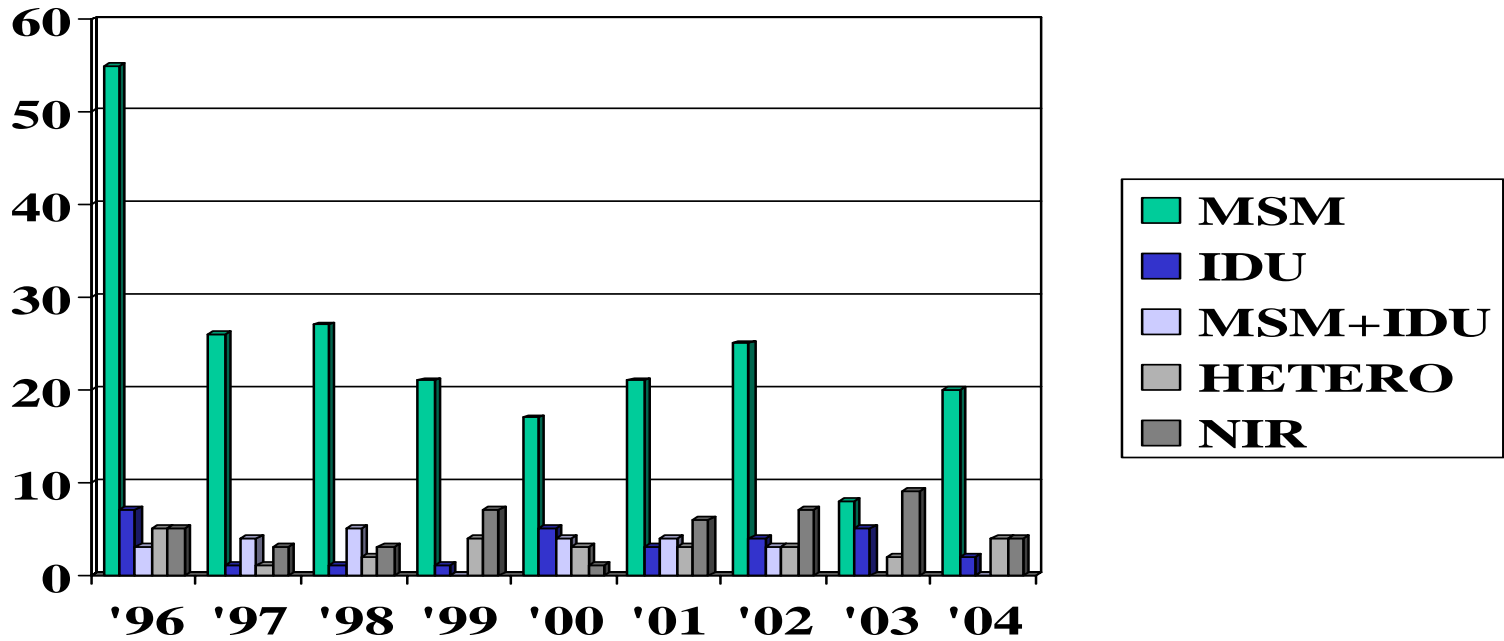


*(6 mos. FOR
HIV DATA)

VENTURA COUNTY PUBLIC HEALTH AGE AT TIME OF AIDS DIAGNOSIS



VENTURA COUNTY PUBLIC HEALTH AIDS CASES BY MODE OF TRANSMISSION AND AIDS DIAGNOSIS



VENTURA COUNTY PUBLIC HEALTH FACILITY OF DIAGNOSIS AIDS CASES

